



4908 McKenna Ct., Columbus, Ohio, 43221 USA
(614) 876-6345
www.aircraftextras.com sales@aircraftextras.com

Oil Quantity Sensor - Pre-order Form

(Oil Quantity Sensor Preorder Form 8-27-2024.pdf)

We require some information about your engine and installation in order to better serve you. Please fill out this form. If we have questions, we will contact you. NOTE: If you require a different type of sensor, please contact us. It may already be on our design list. You may send this 2 page form back to us via regular mail or email in the form of a *.jpg or *.pdf file.

NAME: _____

ADDRESS: _____

ADDRESS: _____ (PLEASE PRINT CLEARLY)

CITY / STATE / ZIP: _____

E-MAIL: _____

PHONE: (Cell) _____ Phone (Home) _____

AIRCRAFT "N" NUMBER and TYPE: _____

COMPLETE ENGINE "NAMEPLATE" MODEL NUMBER: _____

Are you ordering a (15PIN, DSUB conn. wired with 12" long #20AWG)? (extra charge\$) circle one Yes / No

Our "standard sensors" are now ordered without a Temperature Sensor. (by popular customer demand)

Do you want to order a sensor with a Temperature Sensor? (extra charge\$) circle one Yes / No

How will you display Oil Level/Temp? (Our AG6? EFIS model #, other)? _____

I am ordering a: (please fill in the proper boxes)

(Lycoming 1/2-NPT fitting) or (Continental 5/8-18 fitting) or (ULPower 14MMx1.5 fitting) type of sensor, or OTHER: _____, with a Sensor Length of _____ inches. (measurement starting at your oil pan fitting, outside surface) with a Cable Length of _____ inches. (Sensor to Electronics, 48 inches is standard at no extra charge. 72 inches is the maximum suggested.) or, if you are going to put this sensor in a fitting position that you will remove the sensor to change oil, we could put connectors in-between the Electronics and the Sensor with an extra charge. Please contact us.

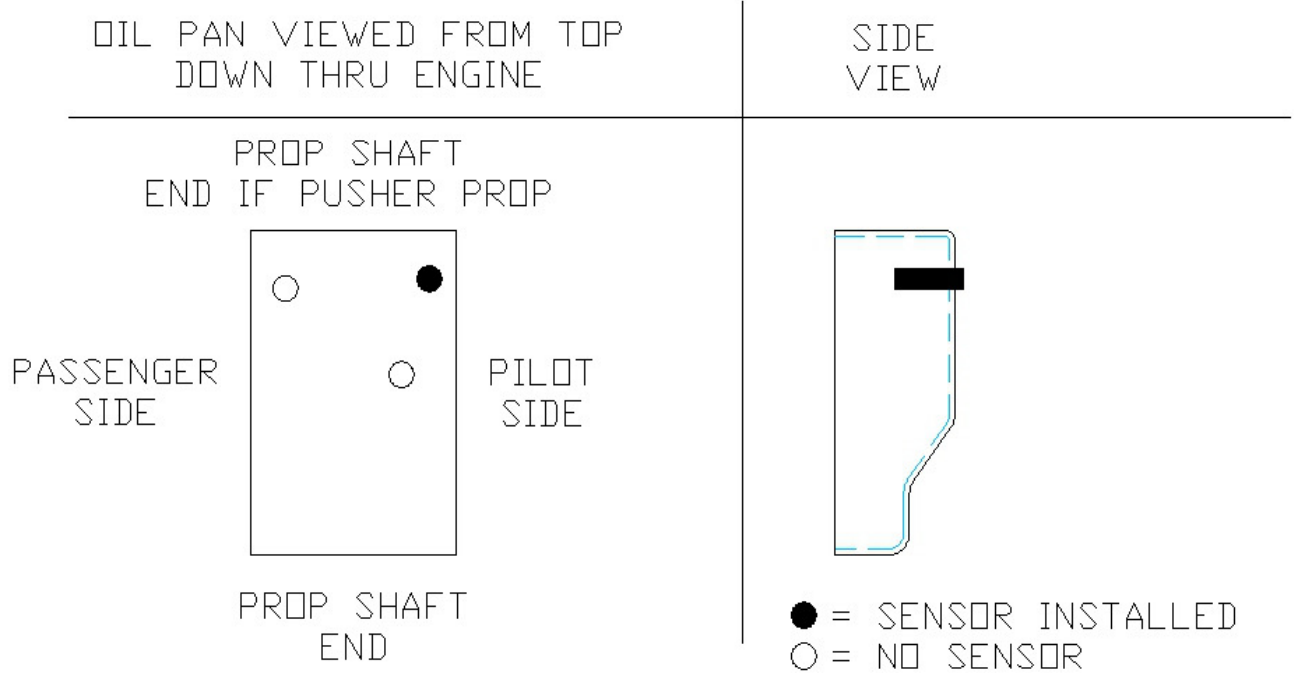
Please acknowledge statements by writing your INITIALS in the the boxes.

I have read and understand the document (Will this Sensor Fit 8-27-2024.pdf) The sensor size and lengths I am ordering complies with this document.

I understand that this Oil Quantity Sensor's oil quantity measurement is not to be used in substitution or in place of the standard oil quantity checks at preflight or otherwise for your aircraft.

SIGNATURE: _____ DATE: _____

PLEASE try to draw your oil sump or container similar to the example below. We would like to understand how many fittings there are in your oil pan or oil container and where you will put the sensor. You should use the fitting hole that will allow you to use the highest length sensor to measure the highest oil level.



DRAW YOUR OIL PAN BELOW HERE:

SIGNATURE: _____ DATE: _____

(On the web: www.aircraftextras.com, By e-mail: sales@aircraftextras.com)